

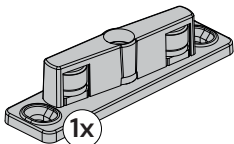
MANUAL DE MONTAGEM
ASSEMBLY MANUAL
MANUAL DE MONTAJE
MANUEL DE MONTAGE

GUIA INFERIOR EFEITO MOLA 10 MM
10 MM SPRING-EFFECT BOTTOM GUIDE
GUÍA INFERIOR CON EFECTO RESORTE DE 10 MM
GUIDE INFÉRIEUR À EFFET RESSORT DE 10 MM

→ ←
mín.
18 mm

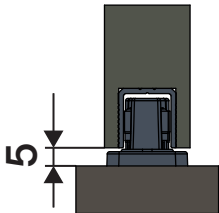


Efeito Mola/ Spring Effect
Efecto Resorte/ Effet Ressort



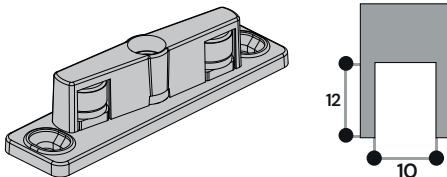
1x
Parafuso/ Screw
Tornillo/ Vis
CP 3,5x40

Guia inferior efeito mola 10 mm
10 mm spring-effect bottom guide
Guía inferior con efecto resorte de 10 mm
Guide inférieure à effet ressort de 10 mm

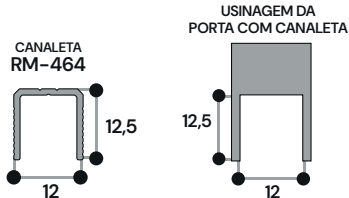


Desconto inferior
Lower discount
Descuento inferior
Remise inférieure

Instalação 1: Sem canaleta inferior
Installation 1: Without bottom channel
Instalación 1: Sin canaleta inferior
Installation 1: Sans rail inférieur

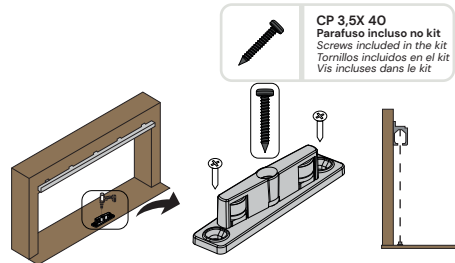


Instalação 2: Com canaleta inferior
Installation 2: With bottom channel
Instalación 2: Con canaleta inferior
Installation 2: Avec rail inférieur



Instalação com RM-464 Canaleta inferior para guia de 10 mm
Installation with RM-464 bottom channel for 10 mm guide
Instalación con canaleta inferior RM-464 para guía de 10 mm
Installation avec rail inférieur RM-464 pour guide de 10 mm

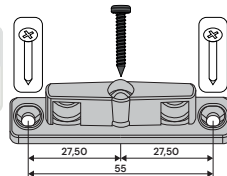
1 **Alinhe e fixe o guia inferior ao centro do trilho superior**
Align and secure the bottom guide to the center of the track
Aline y fija la guía inferior al centro del riel superior
Alignez et fixez le guide inférieur au centre du rail supérieur



Fixe o parafuso central para travamento. Incluso no kit:
Parafuso CP 3,5x40
Secure the central screw for locking. Included in the kit:
CP 3.5x40 screw
Fijar el tornillo central para el bloqueo. Incluido en el kit:
Tornillo CP 3,5x40
Fixer la vis centrale pour le verrouillage. Inclus dans le kit:
Vis CP 3,5x40

Parafusos indicados (não acompanham o kit)
Recommended screws (not included in the kit)
Tornillos recomendados (no incluidos en el kit)
Vis recommandées (non incluses dans le kit)

CC 4,2 X 32 Parafuso/ Screws Tornillo/ Vis	6 MM Buchsa/ Anchor Taco/ Cheville
--	--

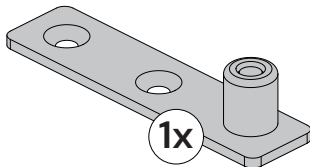


MANUAL DE MONTAGEM
ASSEMBLY MANUAL
MANUAL DE MONTAJE
MANUEL DE MONTAGE

GUIA ROLAMENTADO 10 MM
10 MM BEARING GUIDE
GUÍA CON RODAMIENTO DE 10 MM
GUIDE À ROULEMENT 10 MM



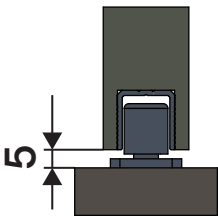
1x



Guia rolamentado 10 mm

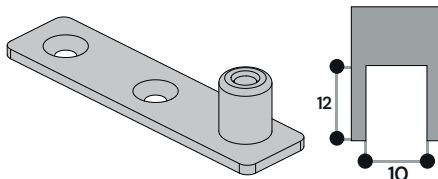
10 mm bearing guide
Guía con rodamiento de 10 mm
Guide à roulement 10 mm

Desconto inferior
Lower discount
Descuento inferior
Remise inférieure



Instalação 1: Sem canaleta inferior

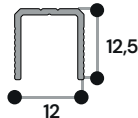
Installation 1: Without bottom channel
Instalación 1: Sin canaleta inferior
Installation 1: Sans rail inférieure



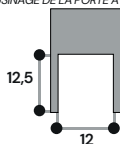
Instalação 2: Com canaleta inferior

Installation 2: With bottom channel
Instalación 2: Con canaleta inferior
Installation 2: Avec rail inférieure

CANALETA/ CHANNEL
CANALETA/ RAIL
RM-464



USINAGEM DA PORTA COM CANALETA
DOOR MACHINING WITH CHANNEL
MECANIZADO DE LA PUERTA CON CANALETA
USINAGE DE LA PORTE AVEC RAIL

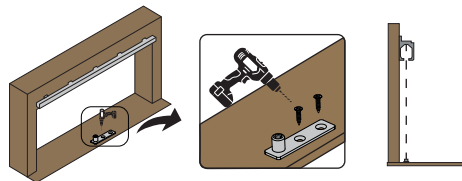


Instalação com RM-464 Canaleta inferior para guia de 10 mm

Installation with RM-464 bottom channel for 10 mm guide
Instalación con canaleta inferior RM-464 para guía de 10 mm
Installation avec rail inférieure RM-464 pour guide de 10 mm

1 Alinhe e fixe o guia inferior ao centro do trilho superior

Align and secure the bottom guide to the center of the track
Aline y fija la guía inferior al centro del riel superior
Alignez et fixez le guide inférieure au centre du rail supérieur



Parafusos indicados (não acompanham o kit)
Recommended screws (not included in the kit)
Tornillos recomendados (no incluidos en el kit)
Vis recommandées (non incluses dans le kit)



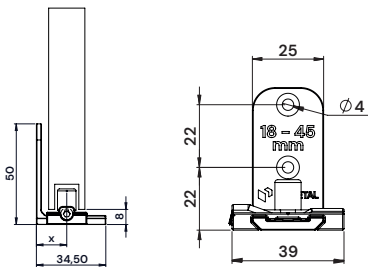
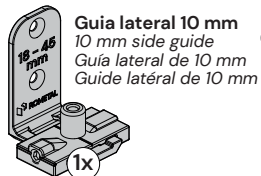
CC 4,2 X 32
Parafuso/ Screws
Tornillos/ Vis

6 MM
Bucha/ Anchor
Taco/ Cheville

MANUAL DE MONTAGEM
 ASSEMBLY MANUAL
 MANUAL DE MONTAJE
 MANUEL DE MONTAGE

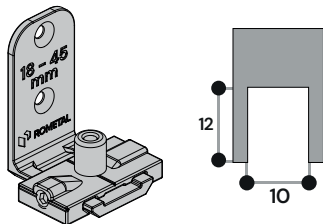
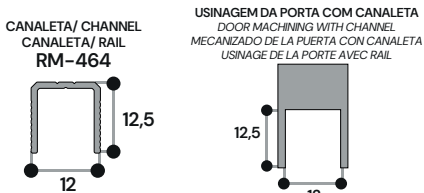
GUIA INFERIOR ROLAMENTADO LATERAL 10 MM
 10 MM LATERAL LOWER ROLLER GUIDE
 GUÍA INFERIOR LATERAL CON RODAMIENTO 10 MM
 GUIDE INFÉRIEUR LATÉRAL À ROULEMENT 10 MM

 mín.
 18 mm

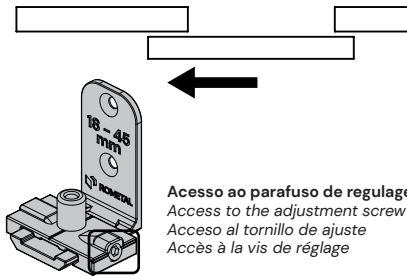
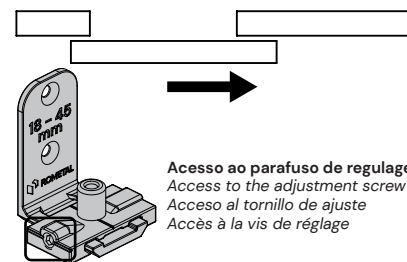
 Rolamentado/ Bearinged
 Con rodamiento/ À roulement

Medida X em mm/ Dimension X in mm
 Medida X en mm/ Dimension X en mm

X mínimo/ minimum X
 X mínimo/ X minimum

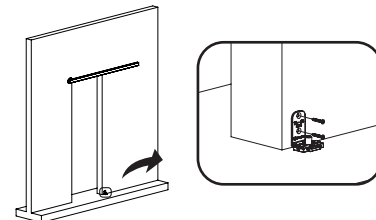
X máximo/ maximum X
 X máximo/ X maximum

15 mm
30 mm
Instalação 1: Sem canaleta inferior
Installation 1: Without bottom channel
Instalación 1: Sin canaleta inferior
Installation 1: Sans rail inférieur

Instalação 2: Com canaleta inferior
Installation 2: With bottom channel
Instalación 2: Con canaleta inferior
Installation 2: Avec rail inférieur

Instalação com RM-464 Canaleta inferior para guia de 10 mm
Installation with RM-464 bottom channel for 10 mm guide
Instalación con canaleta inferior RM-464 para guía de 10 mm
Installation avec rail inférieur RM-464 pour guide de 10 mm

- 1 Pré-montagem do guia de acordo com o lado de abertura da porta**
Pre-assemble the guide according to the door opening side
Preensamblaje de la guía según el lado de apertura de la puerta
Pré-assemblage du guide selon le côté d'ouverture de la porte

Abertura para a esquerda/ Left-hand opening
Apertura hacia la izquierda/ Ouverture à gauche

Abertura para a direita/ Right-hand opening
Apertura hacia la derecha/ Ouverture à droite


- 2 Fixe o guia inferior lateral**
Secure the side bottom guide
Fije la guía inferior lateral
Fixez le guide inférieur latéral



- 3 Alinhe o guia inferior ao centro do trilho**
Align the bottom guide to the center of the track
Aline la guía inferior al centro del riel
Alignez le guide inférieur au centre du rail

